



# The Smart Tachograph Is Here ... And the story has just begun

Marcello Lucarelli | September 10, 2020

[www.continental-corporation.com](http://www.continental-corporation.com)



Continental AG



# Milestone Achieved

The smart tachograph is here



# Milestone achieved

The smart tachograph is here





June 15, 2019

A finish line? Not at all!



# The story has just begun ...

## Services and solutions enabled by the smart tachograph



# The smart tachograph is here ...

Continental is planning its evolution today



# The Story has just begun ...

## Transport Policy Challenges





# The Story has just begun ...

Cabotage and PoW by a Map including Border Crossing Recognition

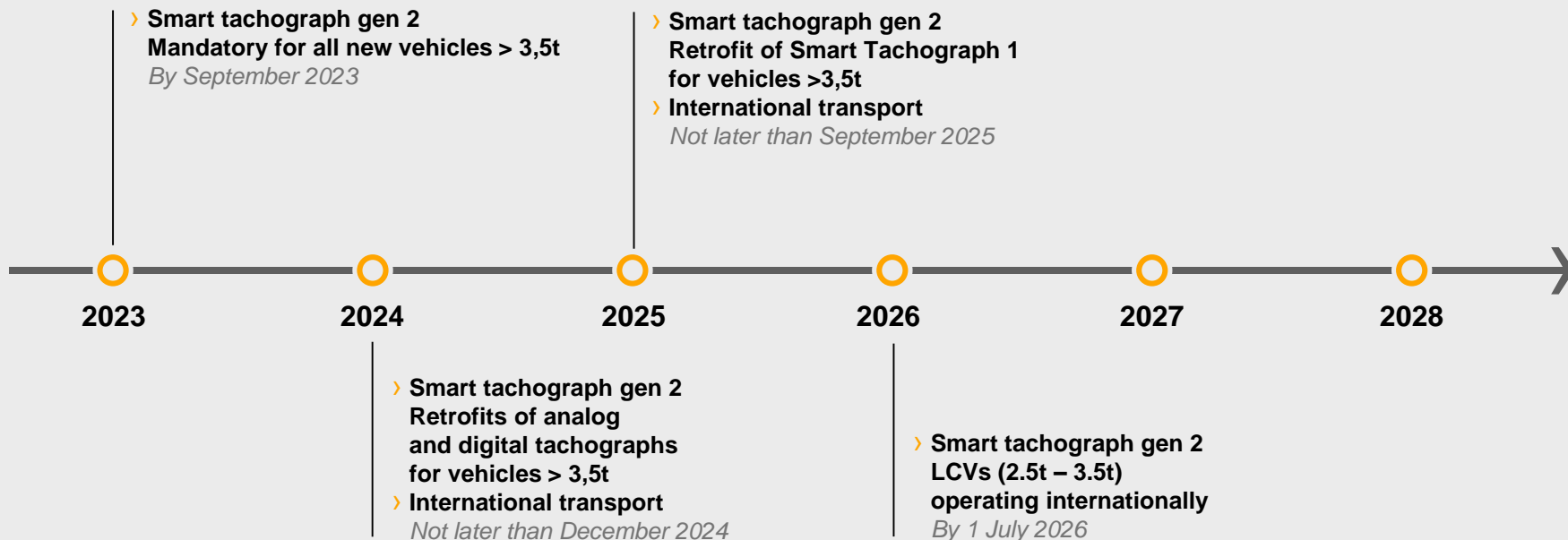






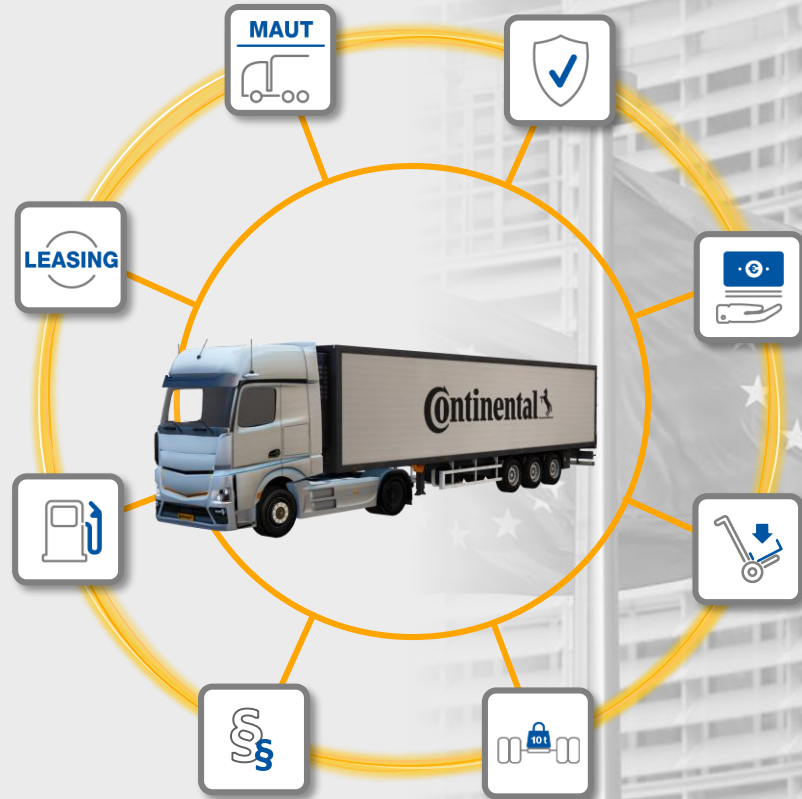
# EU Mobility Package I

## Time schedule\*



\*all dates are taken from EU publications and are preliminary

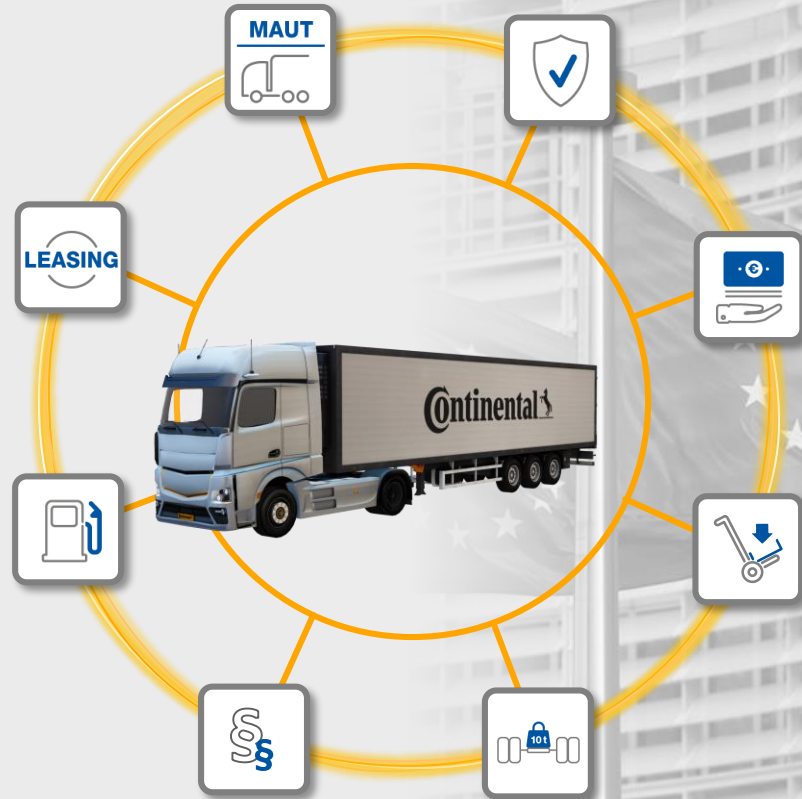




# The story has just begun ...

## Services for Cabotage and PoW





# The story has just begun ...

## Our idea for onboard weighing





# The story has just begun ...

## Our idea for onboard weighing:

## Achieving the OBW security level with the DTCO



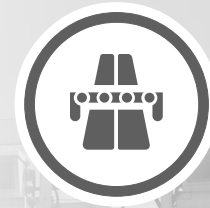
**The story has just begun ...**

Our idea for a single tolling system  
throughout Europe



# The story has just begun ...

## Our idea for a single tolling system throughout Europe





# The story has just begun ...

## Economic challenges





# The story has just begun ...

## Economic challenges

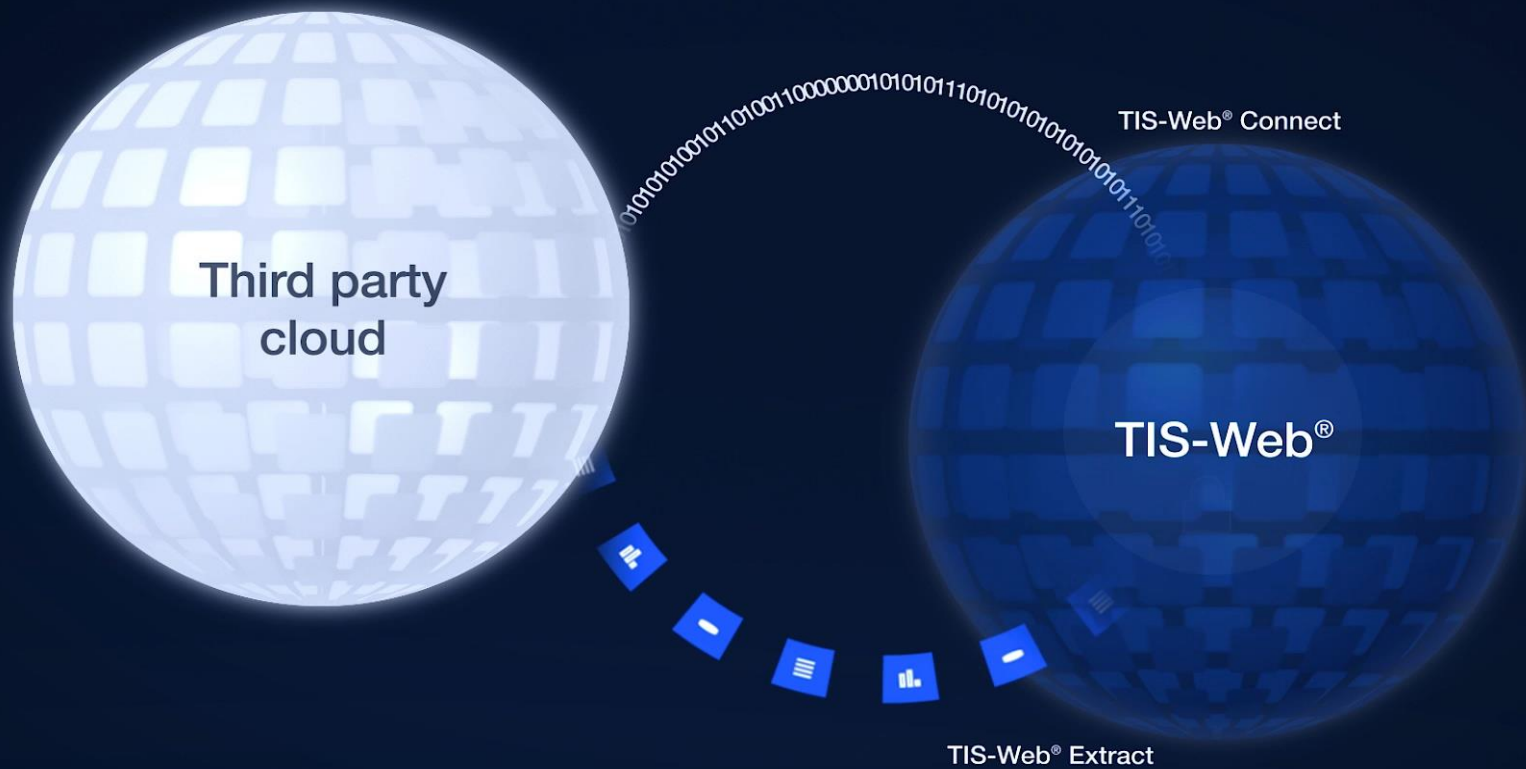


# The story has just begun ...

## Economical challenges









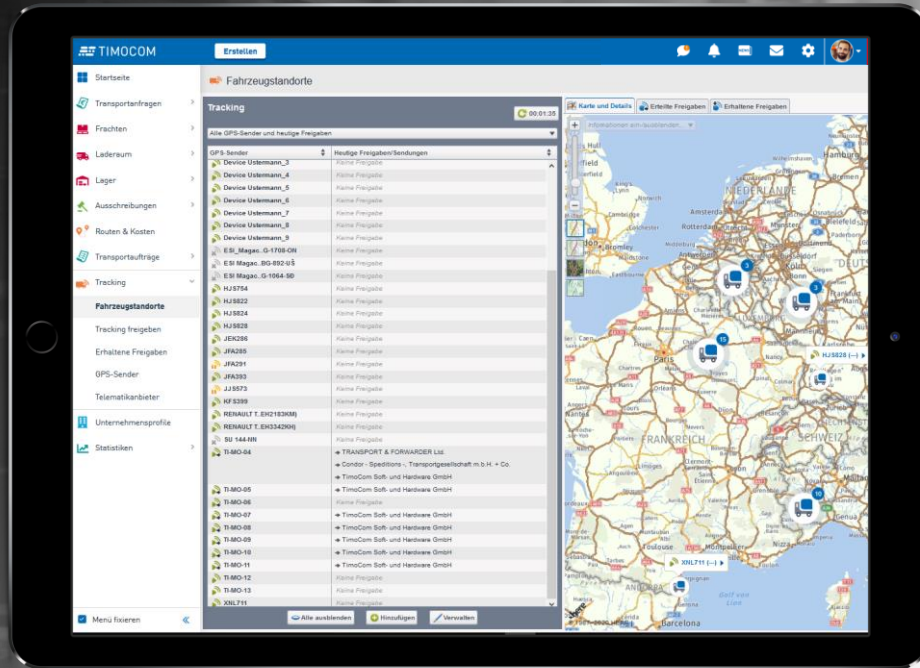


TIS-Web® Extract

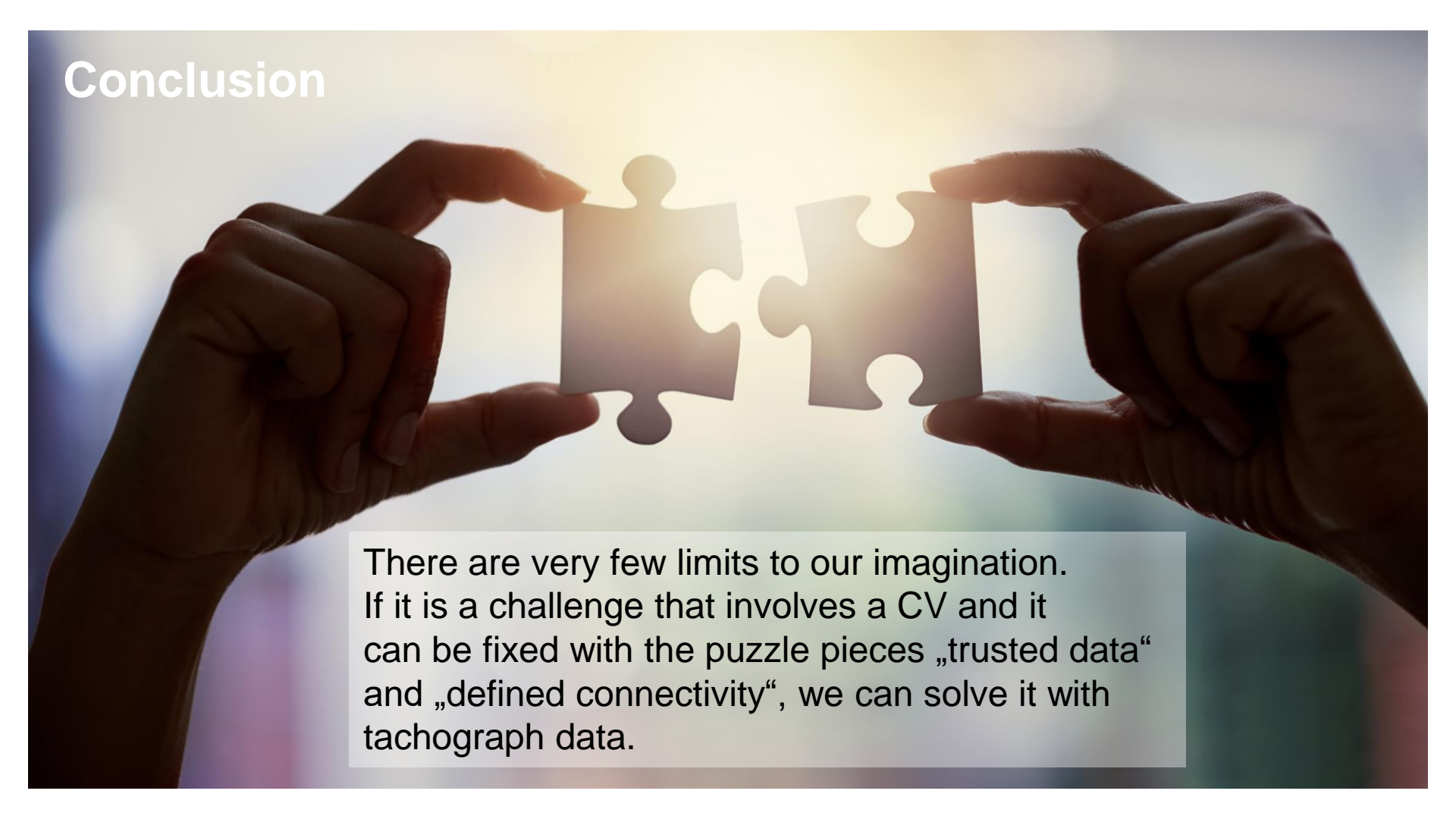


TIS-Web® Extract

# Microservices for fleets and their suppliers – using tachograph data



# Conclusion

A close-up photograph of two hands, one on the left and one on the right, holding two interlocking puzzle pieces. The hands are positioned as if about to snap the pieces together. The background is a bright, out-of-focus sun, creating a strong lens flare and a warm, golden light that illuminates the scene. The puzzle pieces are white and stand out against the bright background.

There are very few limits to our imagination. If it is a challenge that involves a CV and it can be fixed with the puzzle pieces „trusted data“ and „defined connectivity“, we can solve it with tachograph data.

# Questions and Answers



