

Bank of America EU Autos Tech Field Trip

Autonomous Mobility

Ticker: CON
ADR-Ticker: CTTAY
<http://www.continental-ir.com>

Frank Petznick, Head of Business Unit ADAS
May 18, 2021

Autonomous Mobility

Leading Player with Track Record of Profitable Growth

Facts & Figures

1999

Supplied long range radar for first adaptive cruise control system

>100
million

Number of radar sensors on the market worldwide

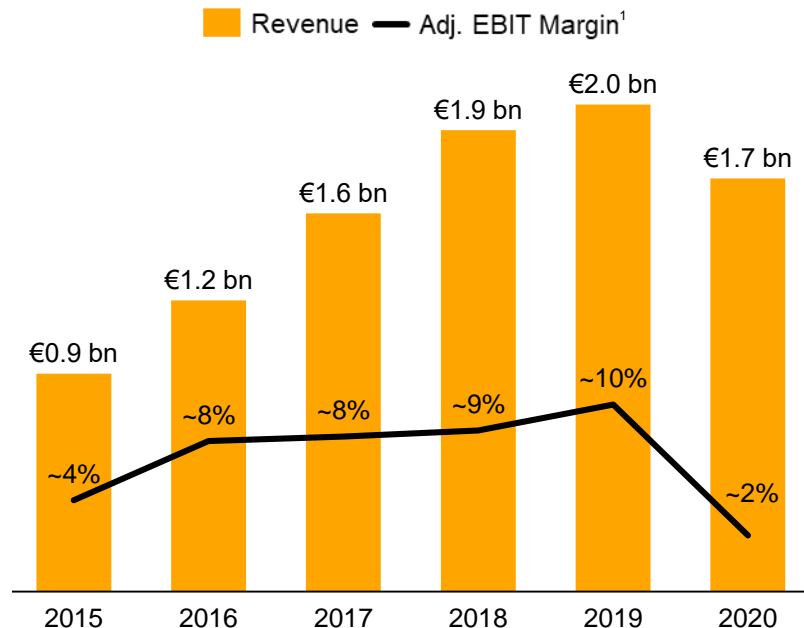
25 OEMs
>300 Models

Diverse and global customer base

>5,000
Engineers

Experienced, talented and dedicated work force

Solid Financials



¹ Before amortization of intangibles from PPA, changes in the scope of consolidation and special effects. Historical financials based on figures as reported in each respective year

Autonomous Mobility

Sizable Mid-term Growth Opportunities from Higher AD¹ Levels

Growing Quote Pipeline

○ Orders² by year of award
● Awarded to Continental

2018 – 2020

~ €35 bn

€9.1 bn

2022E – 2024E

~ €70 bn

Drivers

Content growth

Continental's addressable content per vehicle

- › L2: > €200, predominately sensors
- › L2 Performance/Premium: > 2-4x L2, including AD HPC²
- › L3: > 10x L2, including AD HPC² and Lidar

From components to systems

Full system stacks becoming increasingly relevant

- › Trend toward centralized architectures
- › Customers increasingly looking for optimized system solutions
- › Significance of software growing rapidly

Services, system integration and functions

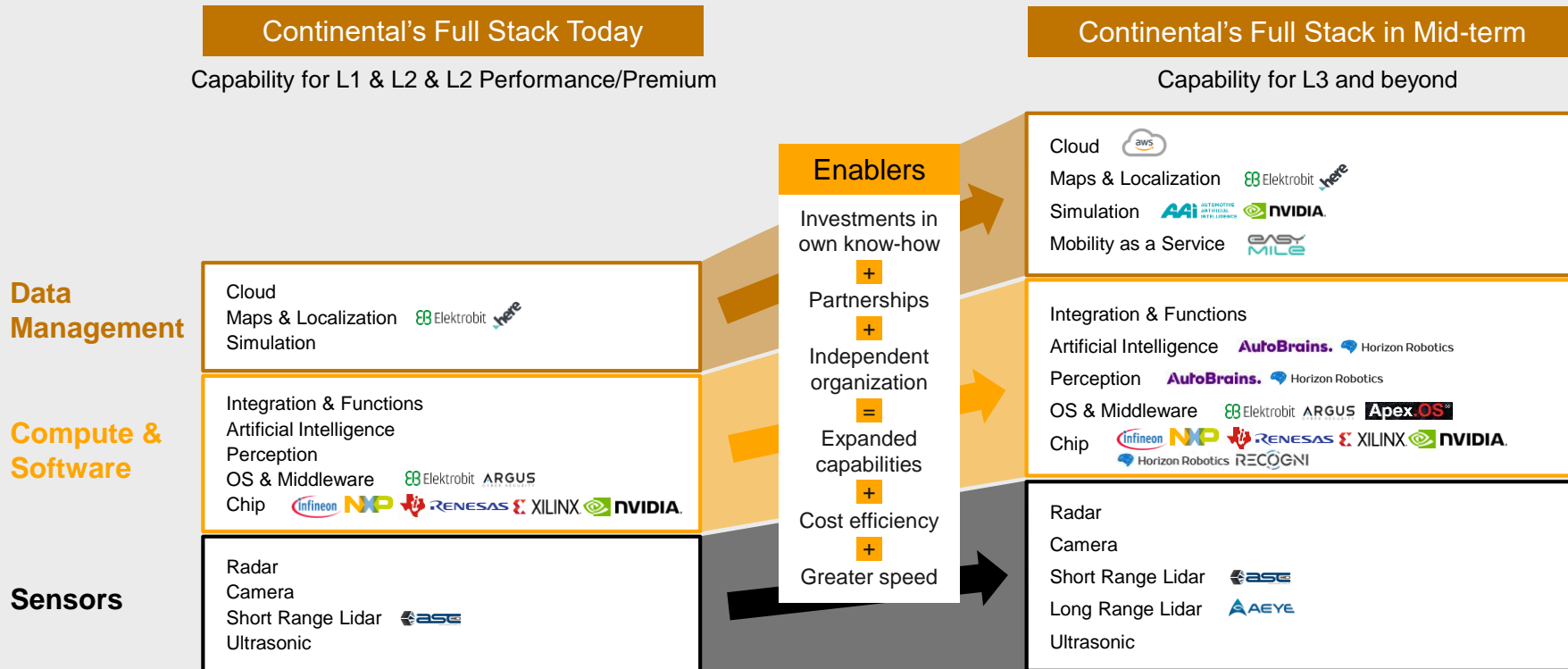
Emerging new business areas and models

- › Based in the cloud
- › Software as a Product
- › Mobility as a Service

¹ Assisted/automated Driving ² Expected lifetime sales of business awarded

Autonomous Mobility

Utilize Position & Partnerships to Expand Full Stack Capabilities



Sensors

Latest Radars Increase Performance, Reduce Complexity and Cost



4D Imaging Radar

- › First to market with scalable, 4D solution for L2-L5 applications
- › Accurate calculation of object location, elevation and speed up to distance of 300 meters
- › Able to classify radar echoes by type of participant (i.e., cars, trucks, bicycles, pedestrians)

Success



SOP:
2021/
2023



SOP:
2024



Radar 6th Generation

- › Scalable solution combines long-range and surround radars to provide 360° environmental detection at ~200-250 meters
- › Patent-pending solutions and compact size allow for flexible placement (i.e., hidden behind bumpers, in vehicle sill)
- › Shared hardware and software platform to reduce complexity and development costs; compatible with different E/E architectures

Success



SOP:
2023



Sensors

Full Range Lidar Portfolio to Address Diverse Applications

Short Range Lidar

In Continental portfolio since 2016



Solid State Flash Lidar



Highlights

- › No gaps in image/data! No motion distortion!
- › High accuracy object and free space detection

Target application:

Urban areas, traffic jam, robocabs

Success

SOP: 2021

L2+
L3

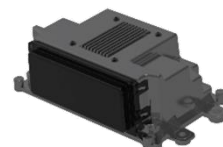


Long Range Lidar

Strategic investment in Lidar pioneer



MEMS¹ Mirror Scanning Lidar

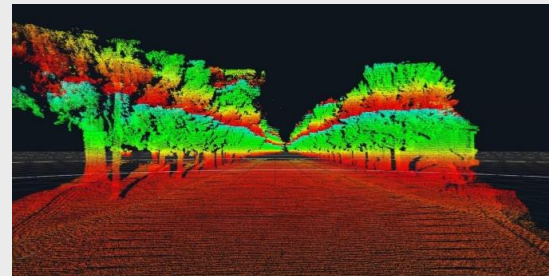


Highlights

- › Patented novel advanced MEMS¹ technology
- › Dynamic spatial resolution enabling concurrent far range, high resolution and high sensitivity at minimized power consumption

Target application:

Highway



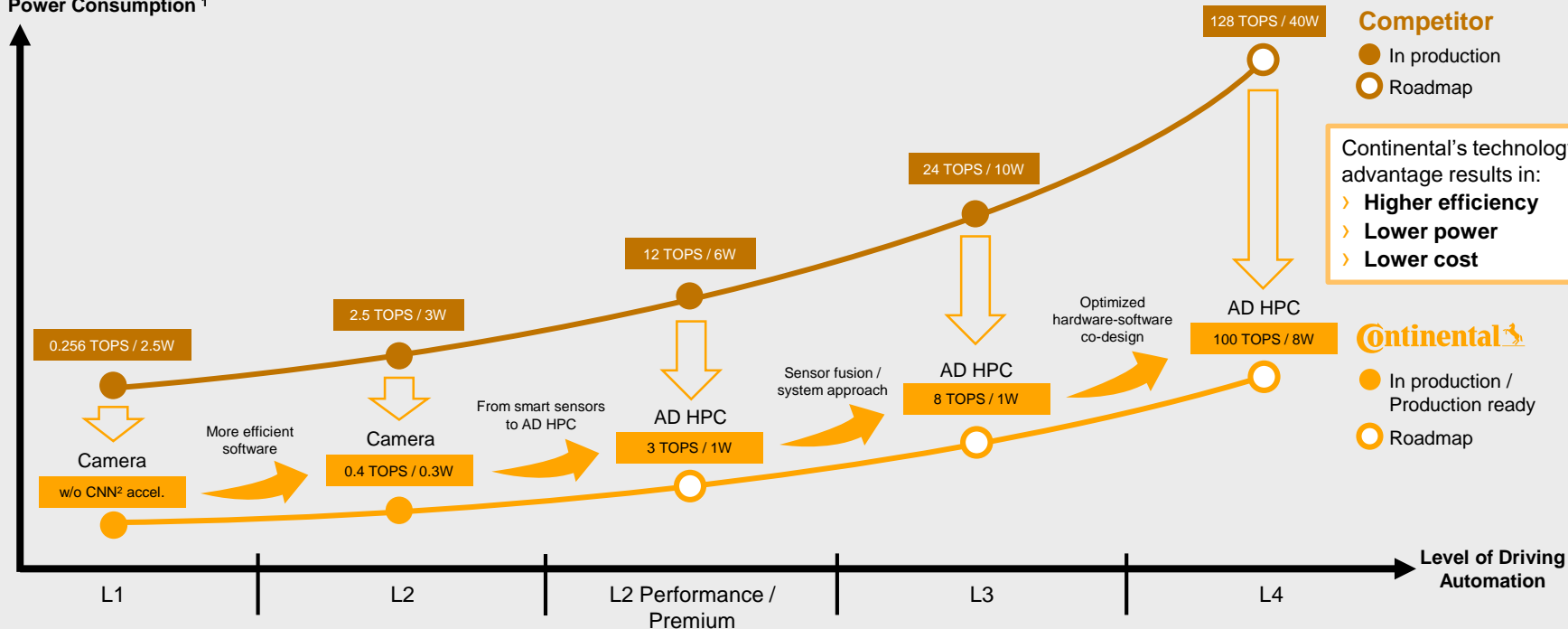
Target SOP: 2024

¹ MEMS: Micro electro-mechanical system

Compute & Software

Our Goal is Higher Efficiency and Lower Cost In-Vehicle ADAS

Chip Performance /
Power Consumption ¹





¹ Power consumption by System-on-Chip (SoC) to generate required trillions of operations per second (TOPS)

² Convolutional Neural Network

Compute & Software

Integration of Partner Technologies to Create Competitive Advantages

| | L2 | L2 Performance/Premium & L3 | L3 & L4 |
|------------------------|--|---|---|
| Partners | AutoBrains. |  Horizon Robotics |  |
| Technology | <ul style="list-style-type: none">› Combine Continental's computer vision with Autobrains' unsupervised AI› Lower data and computing requirements than existing supervised AI solutions | <ul style="list-style-type: none">› Combine Continental's satellite camera solution with an AD HPC based on Horizon Robotics' Journey™ processor | <ul style="list-style-type: none">› Optimized co-design of hardware-software leveraging Recogni's processor for real-time object recognition technology |
| Competitive advantages | <ul style="list-style-type: none">› Lower power consumption = lower bill of material cost and smaller system footprint› Unsupervised AI is easier to adapt to specific scenarios & situations› Less data = easy & online (over the air) updatability and quicker development & validation cycles | <ul style="list-style-type: none">› Optimized bill of materials› Fast development leveraging resources and capabilities of both companies› Privileged access to Chinese market through intended joint venture | <ul style="list-style-type: none">› Extremely high-performing compute power at very low power consumption = lower bill of material cost, simpler cooling and smaller system footprint› Supports scalable architectures |

Data Management

Leveraging Partnerships for Data, Software and Simulations

Collaboration with



- › Open & secure development environment based on Continental Automotive Edge (CAEdge) and AWS cloud computing
- › End-to-end management of sensor data, model training, virtual simulations and virtual software updates

Collaboration with



NVIDIA.



- › Industry-leading supercomputer capable of generating synthetic test kilometers to train AI-based solutions
- › Increased development speed and efficiency versus human-controlled methods

Autonomous Mobility

Summary



We are a leading player in autonomous mobility with a track record of profitable growth

We will benefit from sizable mid-term growth opportunities from increasing autonomous driving levels

We will sustain our leading position by:

- › Utilizing our strong full stack capabilities
- › Investing in expanding our know-how
- › Integrating complementary technologies from innovative partners

Disclaimer

- › This presentation has been prepared by Continental Aktiengesellschaft solely in connection with the Bank of America EU Autos Tech Field Trip on May 18, 2021. It has not been independently verified. It does not constitute an offer, invitation or recommendation to purchase or subscribe for any shares or other securities issued by Continental AG or any subsidiary and neither shall any part of it form the basis of, or be relied upon in connection with, any contract or commitment concerning the purchase or sale of such shares or other securities whatsoever.
- › Neither Continental Aktiengesellschaft nor any of its affiliates, advisors or representatives shall have any liability whatsoever (in negligence or otherwise) for any loss that may arise from any use of this presentation or its contents or otherwise arising in connection with this presentation.
- › This presentation includes assumptions, estimates, forecasts and other forward-looking statements, including statements about our beliefs and expectations regarding future developments as well as their effect on the results of Continental. These statements are based on plans, estimates and projections as they are currently available to the management of Continental. Therefore, these statements speak only as of the date they are made, and we undertake no obligation to update publicly any of them in light of new information or future events. Furthermore, although the management is of the opinion that these statements, and their underlying beliefs and expectations, are realistic as of the date they are made, no guarantee can be given that the expected developments and effects will actually occur. Many factors may cause the actual development to be materially different from the expectations expressed here. Such factors include, for example and without limitation, changes in general economic and business conditions, fluctuations in currency exchange rates or interest rates, the introduction of competing products, the lack of acceptance for new products or services and changes in business strategy.
- › All statements with regard to markets or market position(s) of Continental or any of its competitors are estimates of Continental based on data available to Continental. Such data are neither comprehensive nor independently verified. Consequently, the data used are not adequate for and the statements based on such data are not meant to be an accurate or proper definition of regional and/or product markets or market shares of Continental and any of the participants in any market.
- › Unless otherwise stated, all amounts are shown in millions of euro. Please note that differences may arise as a result of the use of rounded amounts and percentages.

Continental



The Future in Motion