

Driving the Change

Hinnerk Kaiser, Head of Product Development Truck Tires EMEA

Alexander Stangner, Head of Commercial Mobility EMEA





Driving the Change

The new Conti Eco Gen 5 tire line.



OEMs and fleets operate in
difficult environments ...



Rising costs



Economic uncertainty



Legislative tightening



Digitalization



E-Mobility



Road transportation:
Ca. 12 % of CO₂ emissions

The clock is ticking

Not just to deliver on time, but also to prevent further global warming.

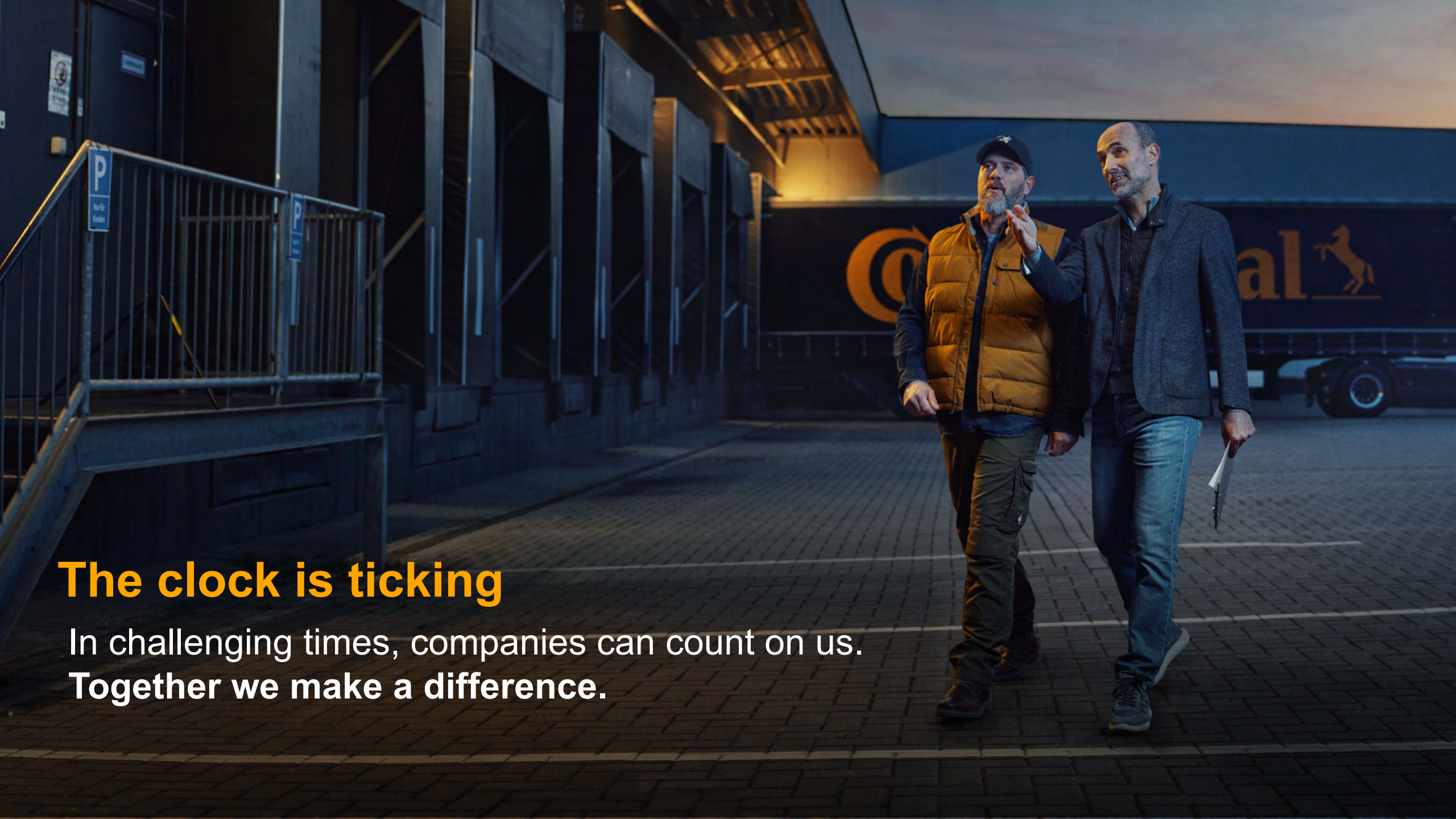




BCG



» **SUSTAINABILITY** factors are becoming more and more important for fleets, **ESPECIALLY** when they are in line with **TOTAL COST OF OWNERSHIP**.



The clock is ticking

In challenging times, companies can count on us.
Together we make a difference.

Let's roll out the facts

The tire use phase and its CO₂ footprint

~90%

Vehicle emissions
influenced by tire's
rolling resistance



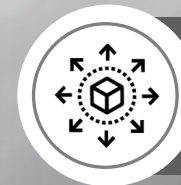
10%



Raw material



Manufacturing



Logistics



End of life

Fleet operating costs

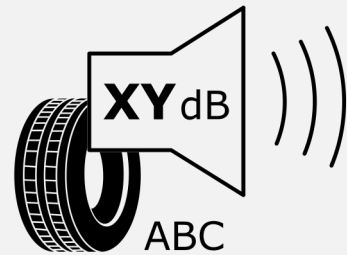
The biggest leverage is reducing fuel consumption



Our commitment to sustainability

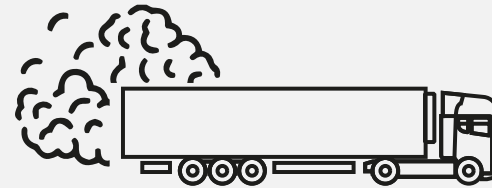
Meeting EU's environmental standards in transportation

EU Taxonomy



Definition of sustainable activities

CO₂ based road toll



CO₂ emissions-dependent cost scheme

Ready for the future

Energy efficiency with optimized rolling resistance



The impact of **rolling resistance** improvements on **electric vehicle** efficiency is > 1.5 times higher than with **diesel trucks!**

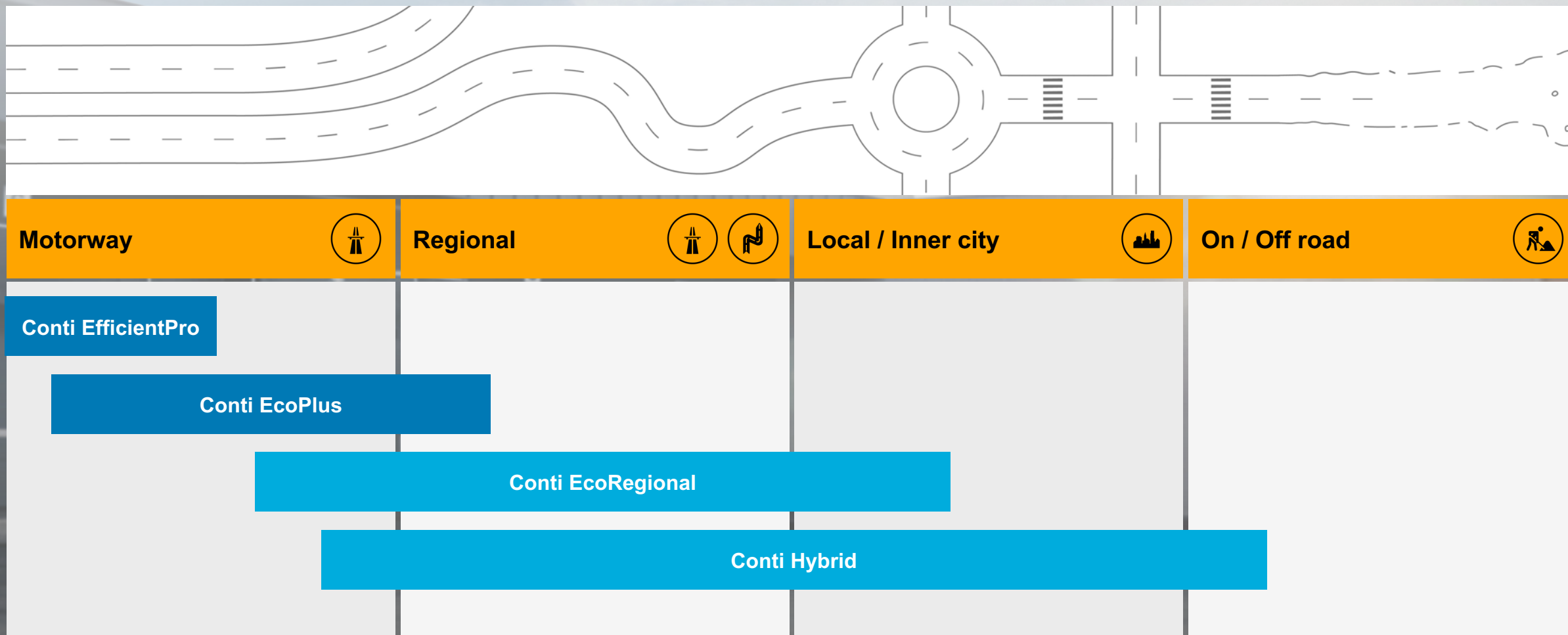


Introducing

The new **Conti Eco HS 5** and **Conti Eco HD 5**. The right tires, at just the right time.

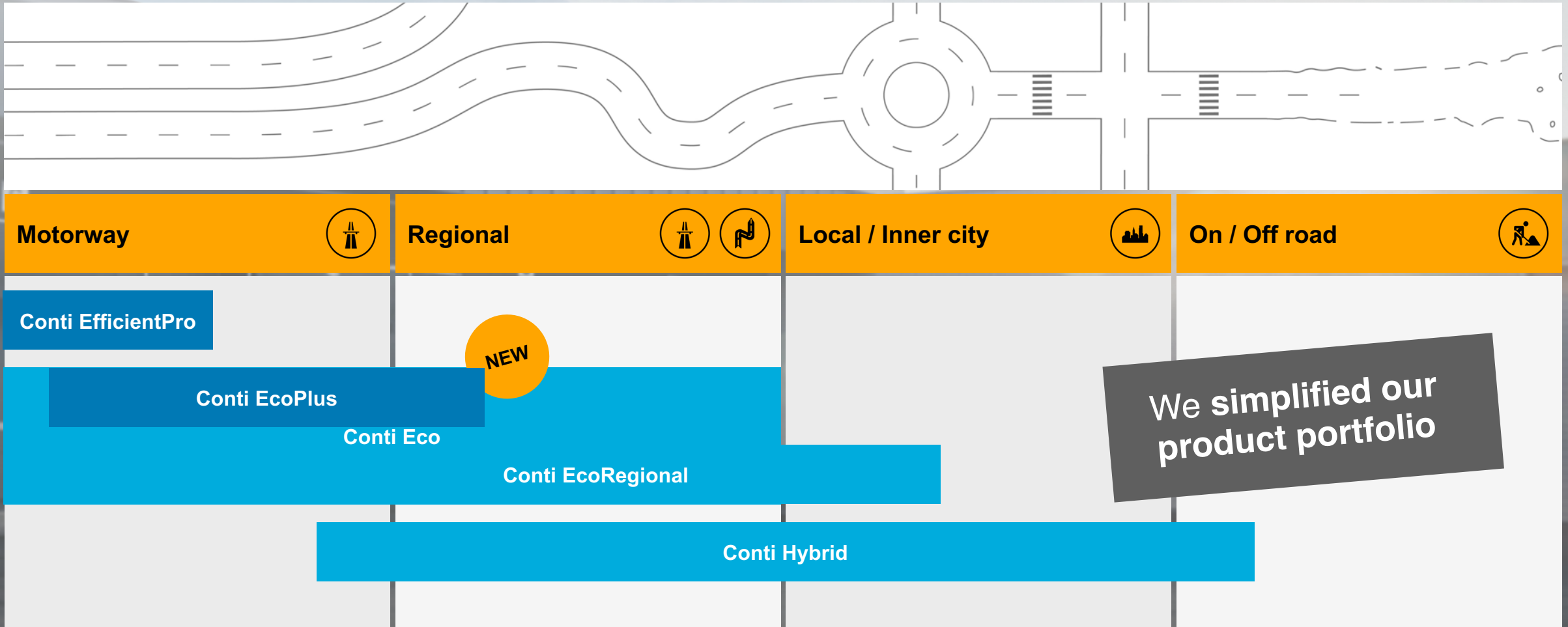
Covering all grounds

Our comprehensive tire portfolio



Covering all grounds

Our NEW comprehensive tire portfolio



Sustainability meets cost-efficiency

Combining economy with ecology

Improved rolling resistance



Lower fuel costs
–
Lower CO₂ emissions

Improved mileage



Lower tire replacement cost
–
Lower tire/road wear emissions
–
Less vehicle downtime

Unchanged retreadability



Higher carcass value
–
Lower waste

Traction & Straight line driving



Versatility
–
Worry free-use

Elevating tire connectivity

Discover RFID & ContiConnect



RFID chipset

Allows automatic tire identification.

In all tires



ContiConnect sensor

Provides full transparency on tire condition and facilitates predictive maintenance.

Optional



Let's take a deep dive into
technical excellence.

The Conti Eco Gen 5 family

Tackling today's transportation challenges



Technical Highlights

Rolling resistance

Significant savings in fuel and CO₂ emissions.

Traction

Remarkable grip, straight line driving, superb handling and even wear throughout the tire's service life.

Applications

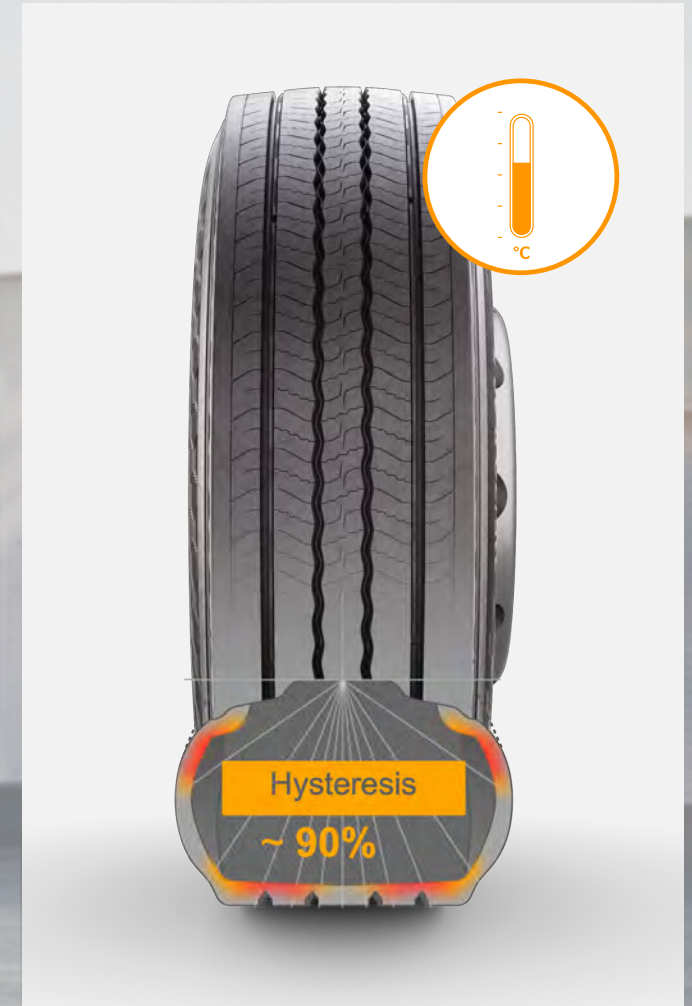
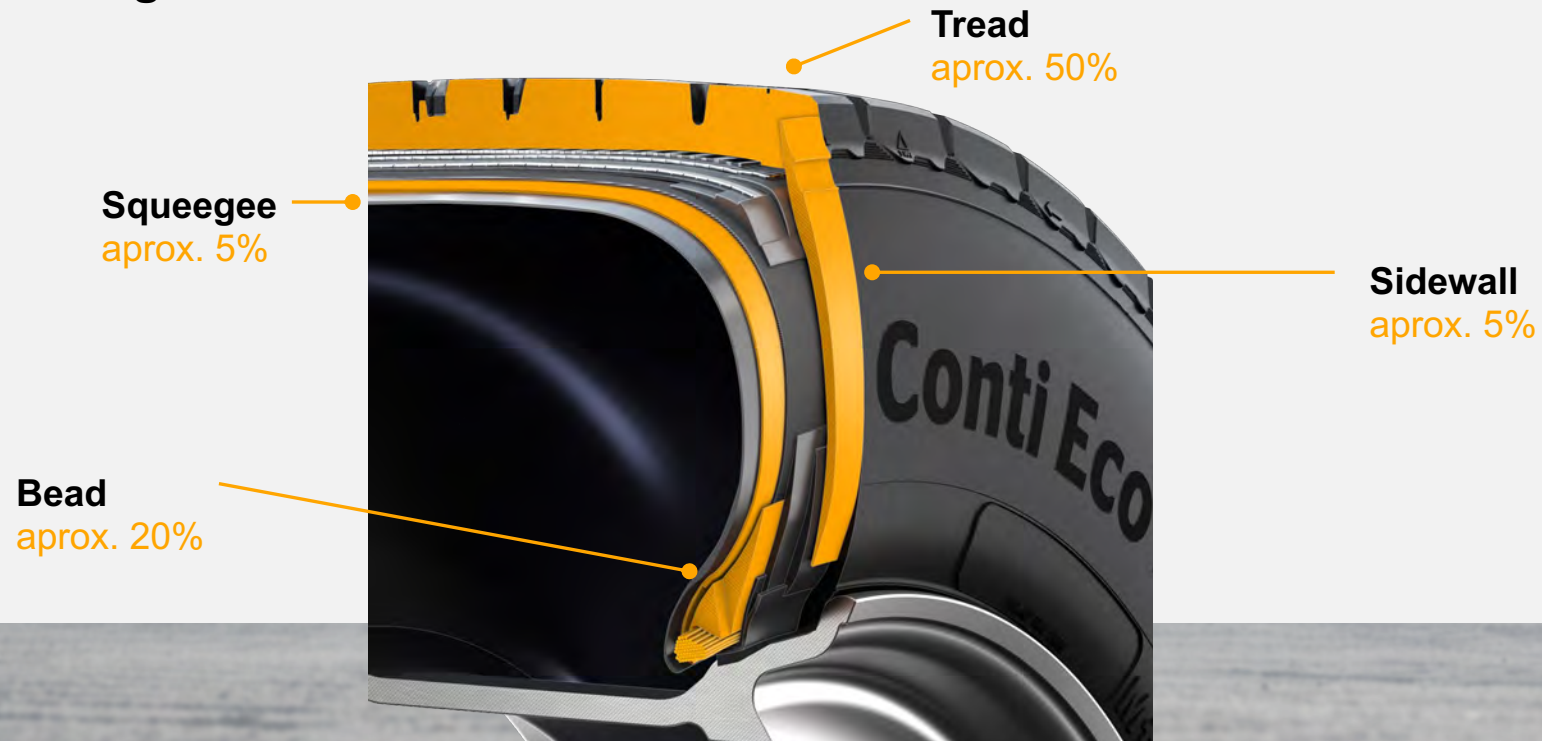
Designed for mixed regional and long-haul routes.

The Conti Eco Gen 5 family

Rolling resistance – these components matter

To improve the **Rolling Resistance** performance of Eco Gen 5, all tire components were considered. Simulation tools were used to determine the contributions of the individual components and the potential for improvement.

Rolling Resistance contribution



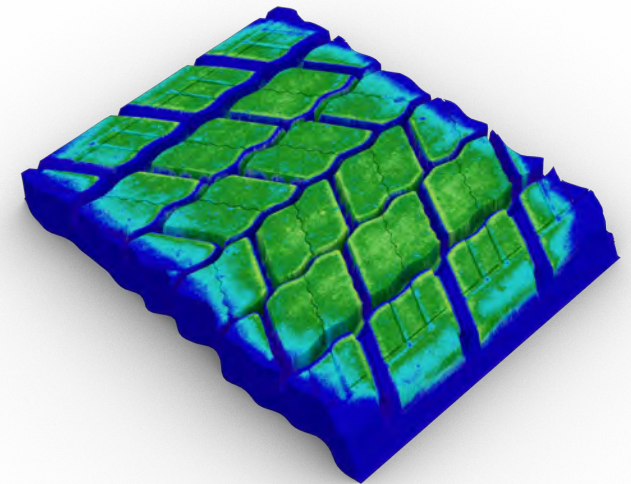
The Conti Eco Gen 5 family

Rolling resistance – the tread's key role



The **tread package** is the biggest contributor to overall rolling resistance. The new Eco Gen 5 combines an **optimized tread compound** with a **new tire contour layout**.

Tread compound:
mixture of natural rubber (NR) and novel butadiene rubber (BR)



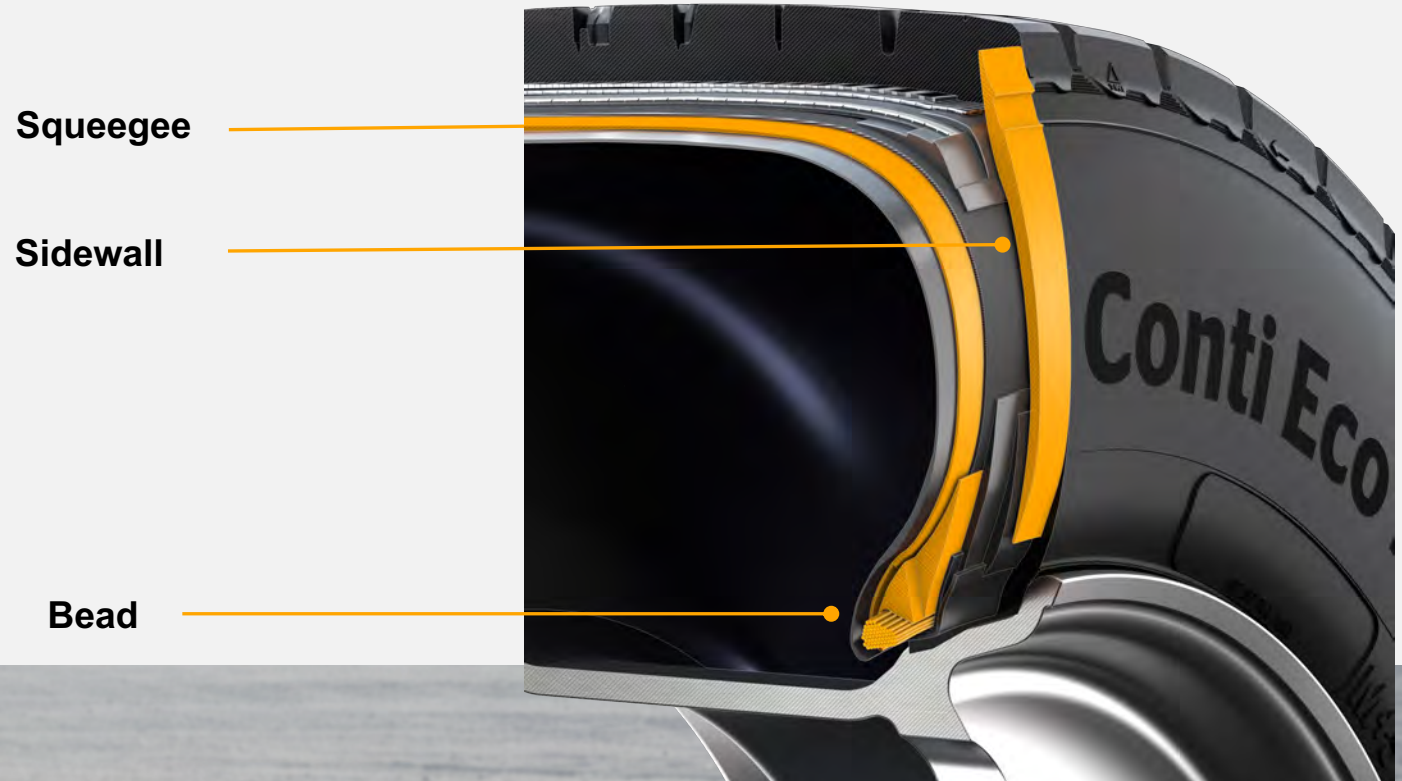
Chamfered edge tire contour layout optimizes footprint shape and results in less heat buildup in the shoulder area.

The Conti Eco Gen 5 family

Rolling resistance – optimizing the casing

Optimizing rolling resistance in the casing has the advantage that it does **not compromise tire performance in other criteria.**

The **retreaded tire** also **benefits** from the improvement of these casing components.



The Conti Eco Gen 5 family

Traction – steadfast stability through advanced design

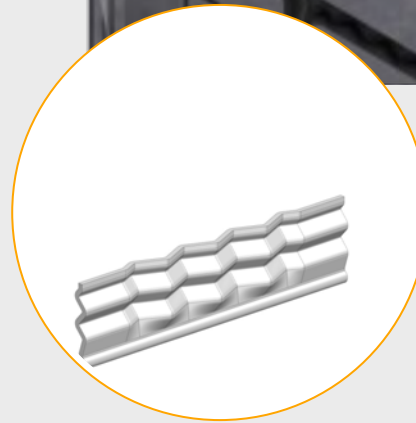


Traction performance is very important, especially in regional applications.

The Eco Gen 5 tread design includes special elements that improve traction.

The Conti Eco Gen 5 family

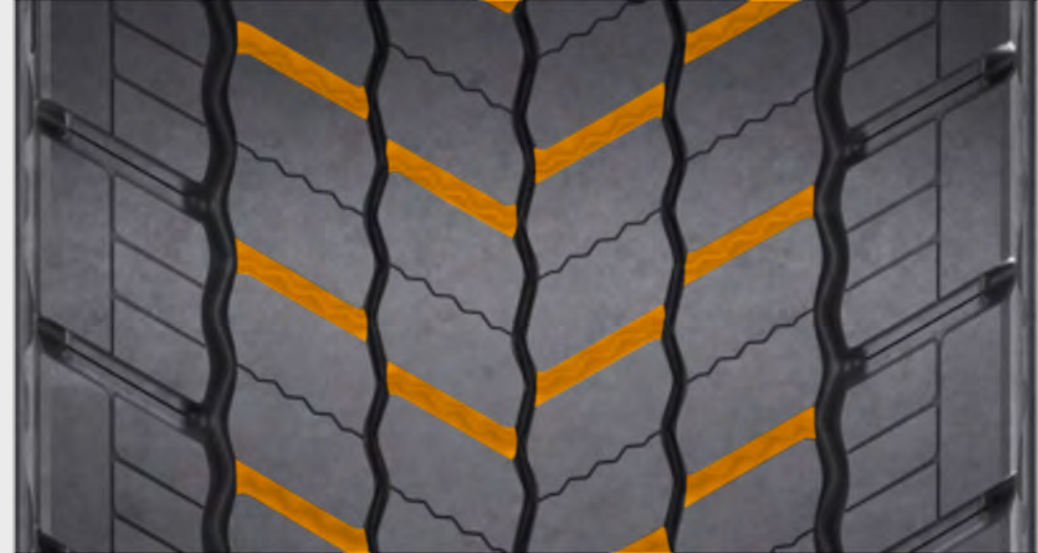
Traction – steadfast stability through advanced design



Full-width 3D matrix sipes
to ensure superior **traction** in
wet & wintry road conditions

The Conti Eco Gen 5 family

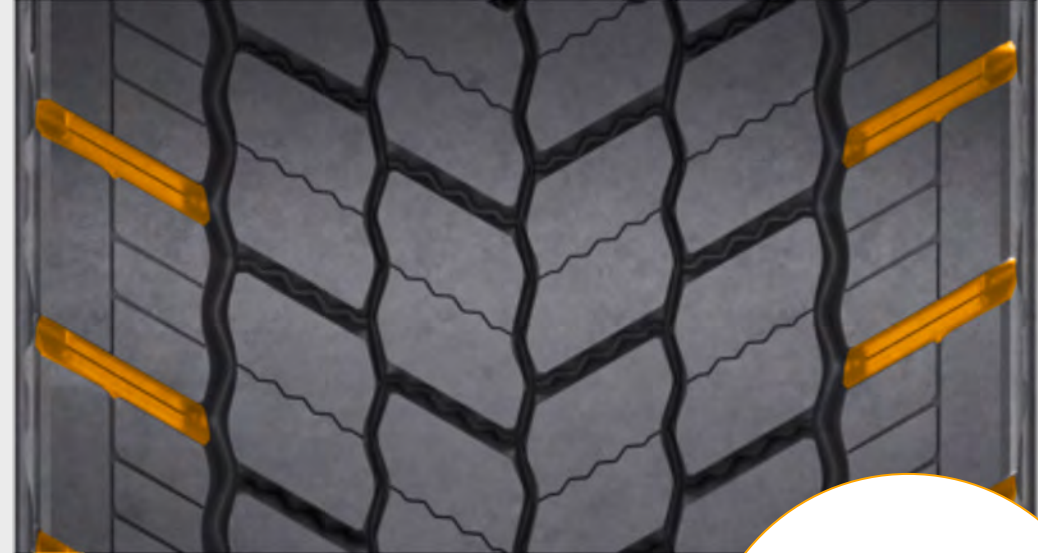
Traction – steadfast stability through advanced design



Lateral grooves
for optimum traction in all
weathers and regional conditions

The Conti Eco Gen 5 family

Traction – steadfast stability through advanced design



Full-width 3D matrix sipes in the shoulder track within the tie bars improve traction and water drainage

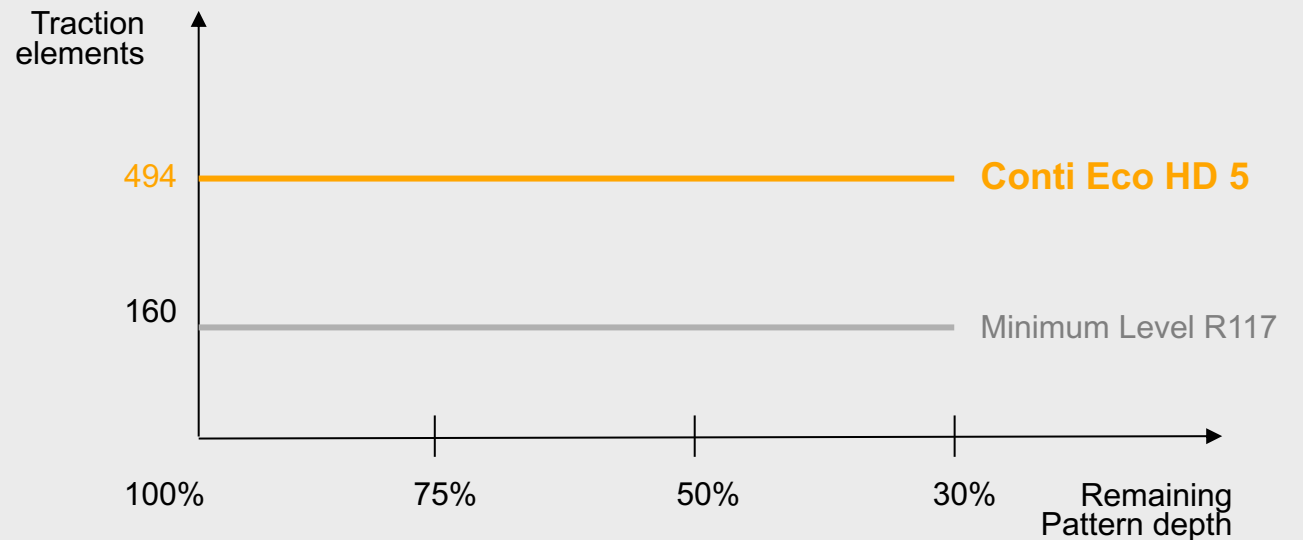


The Conti Eco Gen 5 family

Traction – steadfast stability through advanced design



The new siped and grooved design delivers excellent traction over the lifetime of the tire.



With 30% of the pattern depth remaining, **100% of the traction elements are still operational.**



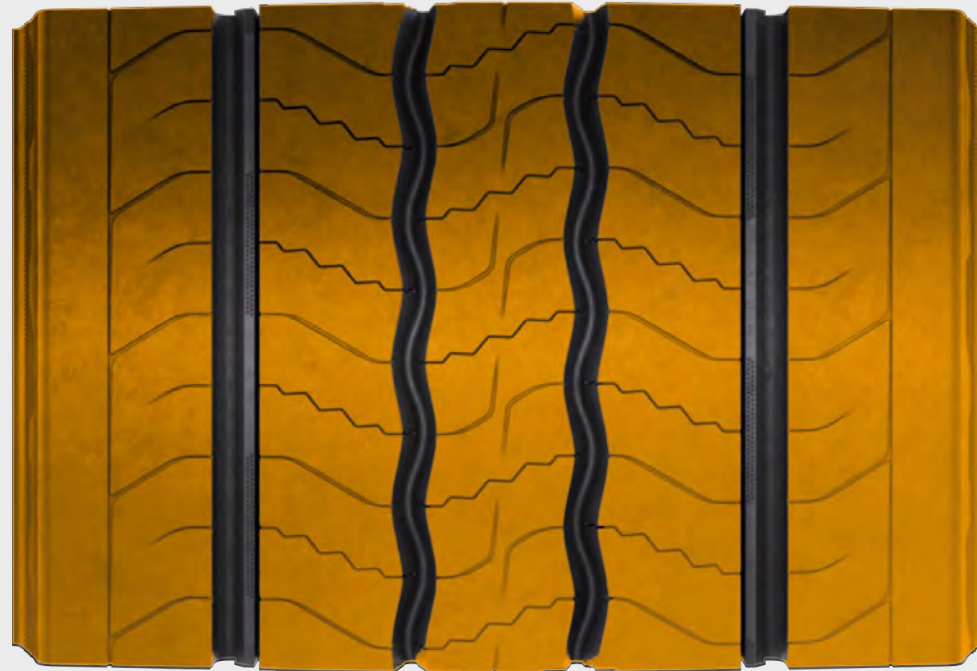
Meet your fuel saver for
mixed regional and
long-haul applications.

The Conti Eco Gen 5 family

Delivering robustness for both regional and long-haul work

Brand new pattern design
**boosts performance in
both regional and long-
haul applications.**

A robust **5-rib tread** design
for great regional performance
and high pattern stiffness for
long-haul applications



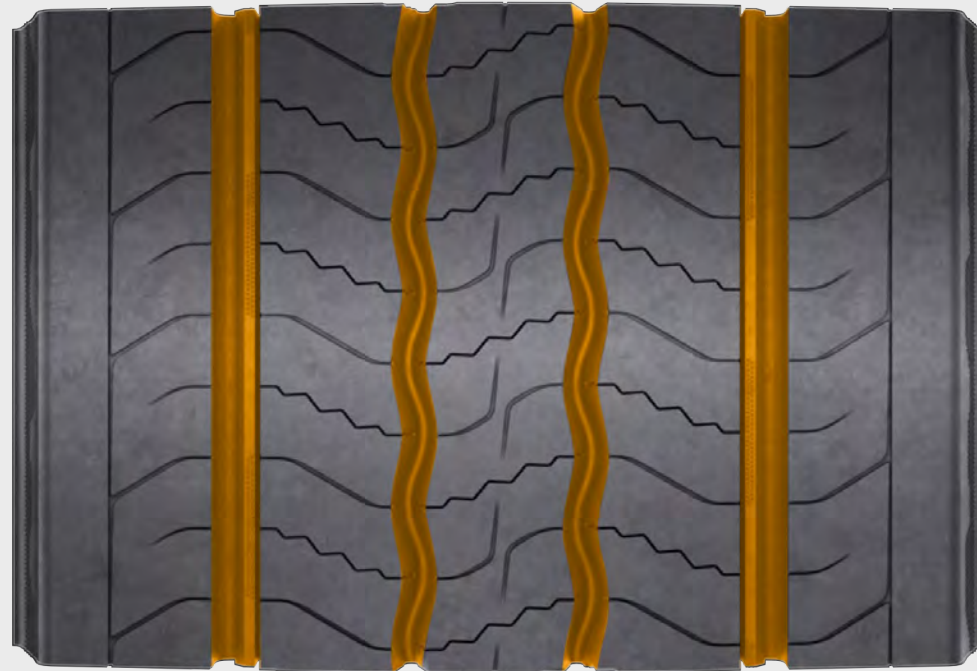
The Conti Eco Gen 5 family

Delivering robustness for both regional and long-haul work

Brand new pattern design
**boosts performance in
both regional and long-
haul applications.**

A robust **5-rib tread** design
for great regional performance
and high pattern stiffness for
long-haul applications

Optimized groove design
with better force distribution
and reduced groove crack
susceptibility



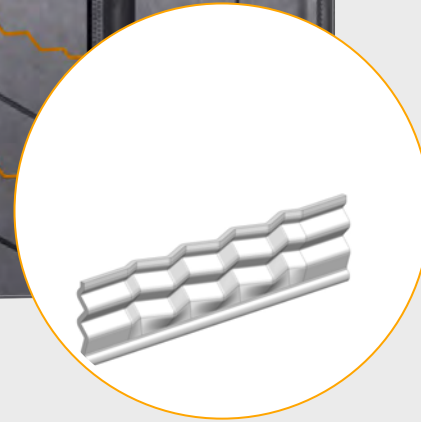
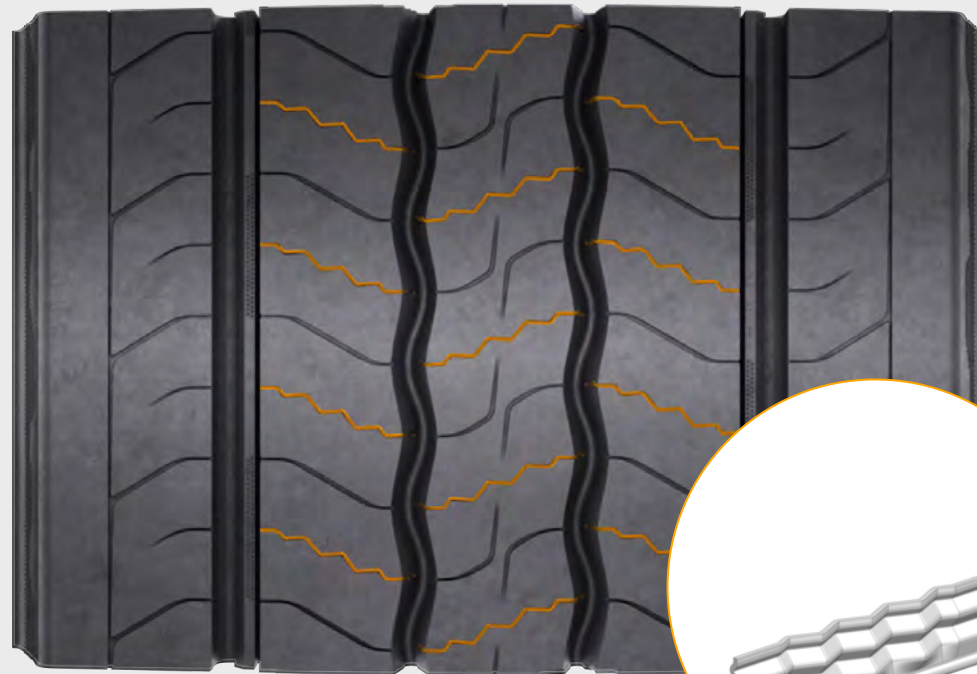
The Conti Eco Gen 5 family

Delivering robustness for both regional and long-haul work

Brand new pattern design
**boosts performance in
both regional and long-
haul applications.**

A robust **5-rib tread** design
for great regional performance
and high pattern stiffness for
long-haul applications

Optimized groove design
with better force distribution
and reduced groove crack
susceptibility



**Full-width 3D matrix
sipes** deliver the right
balance between
flexibility and stability

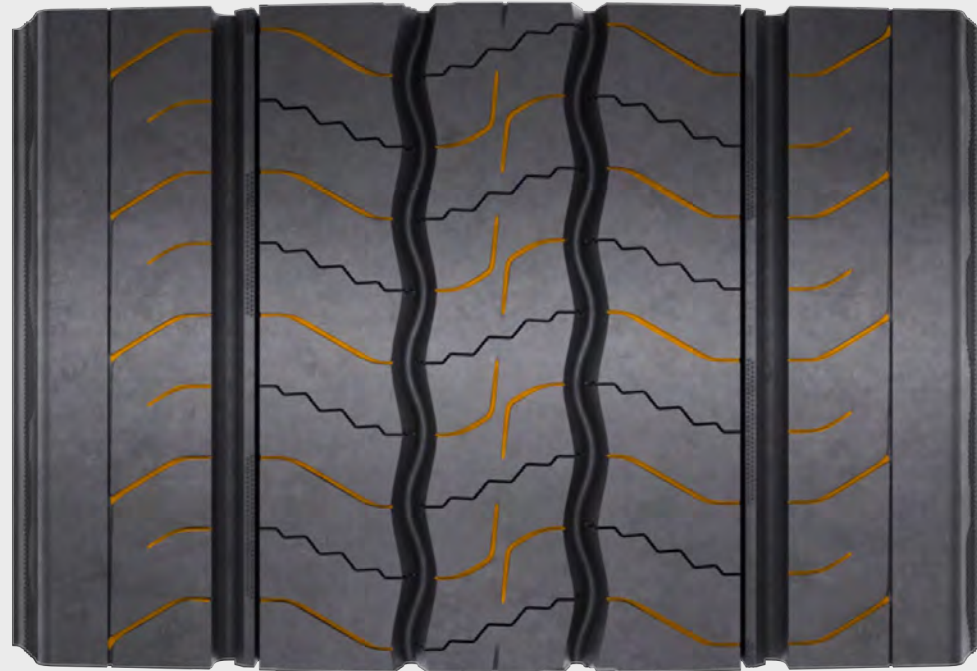
The Conti Eco Gen 5 family

Delivering robustness for both regional and long-haul work

Brand new pattern design
**boosts performance in
both regional and long-
haul applications.**

A robust **5-rib tread** design
for great regional performance
and high pattern stiffness for
long-haul applications

Optimized groove design
with better force distribution
and reduced groove crack
susceptibility



**Full-width 3D matrix
sipes** deliver the right
balance between
flexibility and stability

**Innovative surface
design styling**

The Conti Eco Gen 5 family

Delivering robustness for both regional and long-haul work

The new Eco 5 comes with an optimized belt layout designed for **both regional and long-haul applications**

4-layer belt concept with second layer spooled in **circumferential (0°) direction**

Optimized pressure distribution under changing load conditions for **even wear**

Reduced stress/strain at belt edges for **improved service life.**

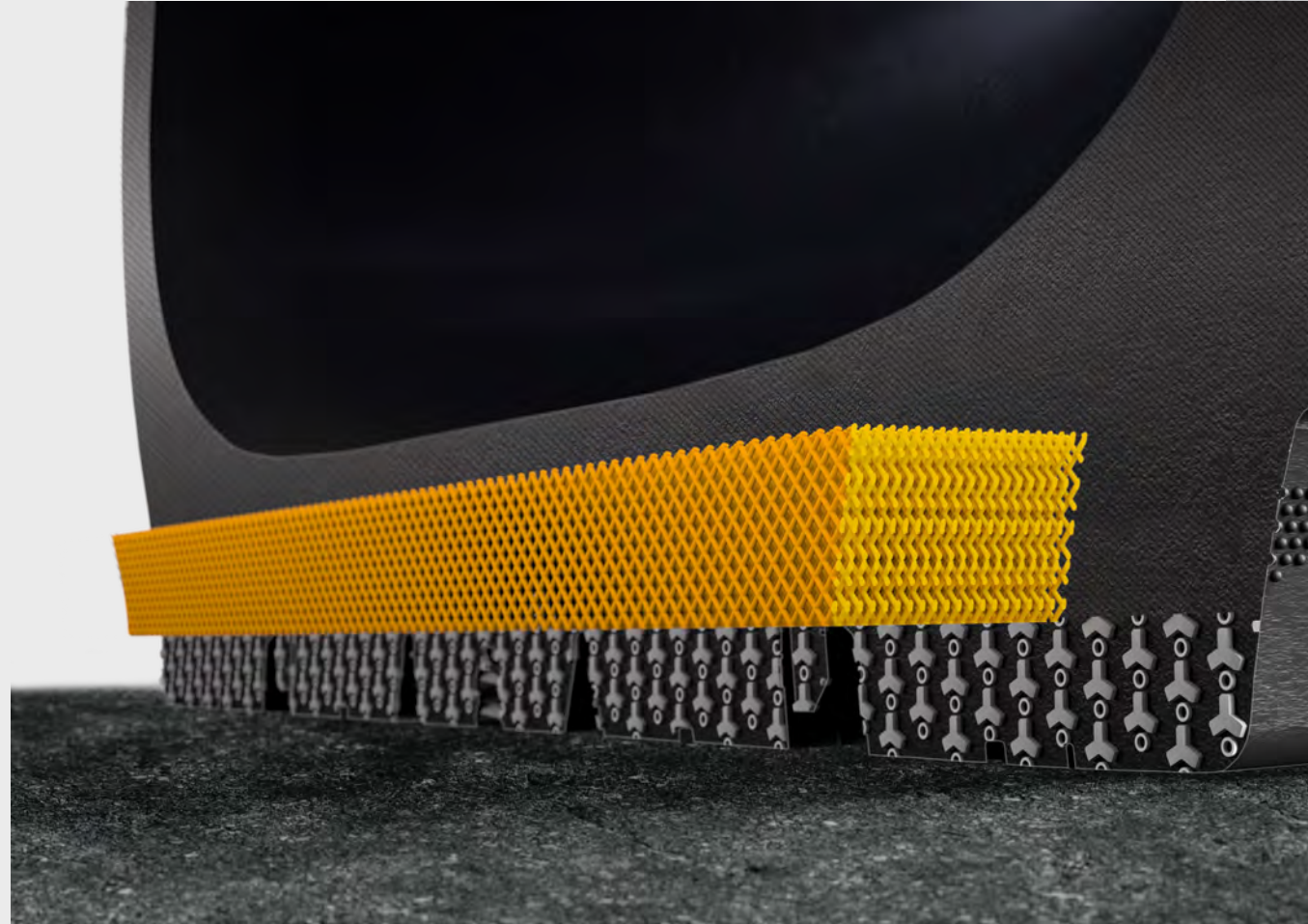


The Conti Eco Gen 5 family

Prioritizing rolling resistance and mileage

The **high-volume base** makes for **reduced rolling resistance** and allows the use of a **robust, mileage-focused cap compound**.

This combination meets the demands of both **long-haul** and **regional applications**.



The Conti Eco Gen 5 family

Taking the extra mile for the best performance



26 x
to the moon and back

Simulations

~ 200 variants

Prototypes

~ 1,000 tires

Tests (test racks & tracks)

~ 600 tests

Field tests

- › various countries/applications/
climate conditions
- › 20 million test km



» Significantly improving rolling resistance and increasing versatility was a true challenge. I am proud we were able to achieve it.

Andreas Schwenke

Project Manager Conti Eco Gen 5

Our most advanced tire ever

Achieving the right performance at the right time*



B



B



A/71



B



C



A/73



- › +12% Rolling resistance on steer axle
- › +12% Mileage on steer axle
- › +10% Rolling resistance on drive axle
- › +2% Mileage on drive axle
- › Same great retreadability
- › First EU taxonomy compliant tire for the mixed regional and longhaul application
- › Super versatile use

*Exemplary for 315/70 R22.5. Comparison vs. EcoRegional 3+ and EcoPlus 3+. All tests, simulation, estimations based on 315/70 R22.5 size. RR and noise based on internal tests. Mileage based on internal simulation model. Wet braking, traction over lifetime, retreadability, stone trapping based on engineering prediction.

Unlocking savings potential

Significant cost and CO₂ reductions for your business
EcoRegional Gen3+ vs. Eco Gen 5

Driving distance: **80,000 km per year**
Fleet Size: **100 truck fleet**
Application: **Average Regional Distribution**
70% Regional Roads
30% Motorway
Diesel Price: **Average 1,50 € / Liter**
Tire Size: **315/70 R 22.5 Steer and Drive**

Fuel savings per year **49.683 Liters**

Combines savings per year **69.561 €**

CO₂ savings per year **130 Tons**



Shaping the
**future of the
transportation business.**

Continental 
The Future in Motion



Thank You!